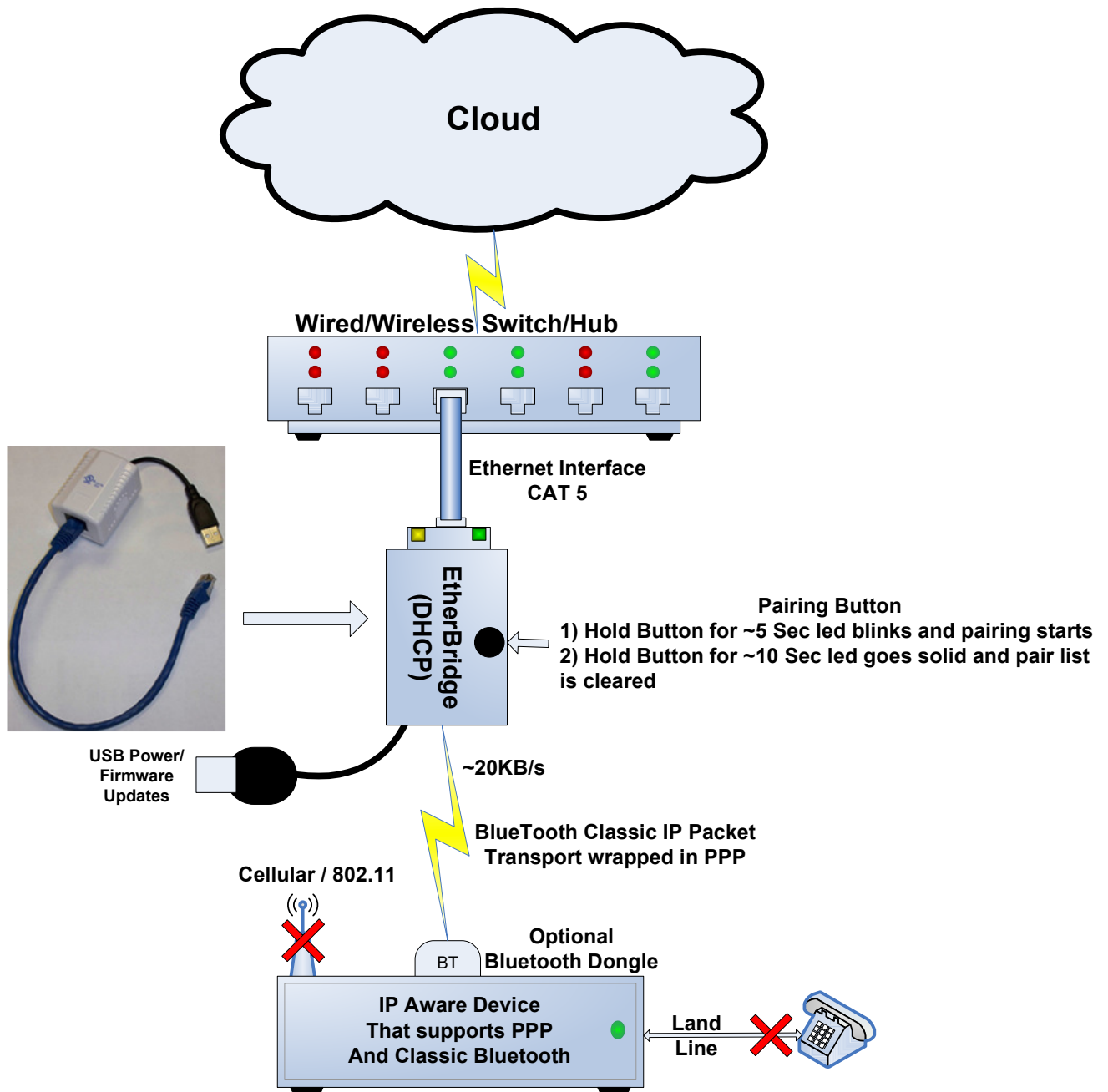


EtherBridge™ IP Router/Bridge

Firmware Download: www.blueradios.com/forum (BR-EB-01-PPP-1.1.0.3)



Example of PPP on a Linux box using BlueRadios D2 dongle (ver. 3.4.10.0-D2):

- 1) Pair Dongle with EtherBridge by pressing the EtherBridge Pairing button for ~5 Seconds. Connect with a terminal program like Minicom at 115200,8,n,1,noHwFlow and type ATDM,ECFE7E10E240,1102
- 2) On the Linux box type: `pppd /dev/ttyUSB0 115200 mtu 900 updetach defaultroute asyncmap 0 crtscts debug local connect 'chat "" atdm,ECFE7E10E240,1102 CONNECT ""' idle 0 novj ipcp-max-failure 20 pap-max-authreq 20 user test password test noccp`
- 3) On the Linux box type: `ping www.abc.com` or `xx.xx.xx.xx`